



KIP SYSTEMS INFORMATION Texas DIR

Effective August 2025

KIP Systems Information

Table of Contents

KIP COLOR SERIES

KIP 700 C Series <i>low / mid volume systems</i>	4-6
KIP 900 Series <i>high volume systems</i>	7-9

KIP 70 SERIES

KIP 71 Series (1) Roll <i>low volume systems</i>	12
KIP 71 Series (2) Roll <i>low volume systems</i>	13
KIP 75 Series <i>mid volume systems</i>	14-15
KIP 79 Series <i>high volume systems</i>	16

ACCESSORIES

KIP Scan Systems	18-19
KIPFold Systems	20

SERVICES

KIP Suggested Maintenance Plans	22-25
KIP Suggested Installation Services	26
KIP Crated Dimensions & Weight	27



KIP Color Series



KIP 700 C SERIES

LOW VOLUME SYSTEMS

700 C SERIES



KIP 730 C | KIP 740 C

6 B&W | 6 COLOR 'D' / 'A1' PRINTS PER MINUTE

KIP 700 C Series systems utilize Contact Control Technology (CCT), the ultimate wide format imaging solution. The ability to control the placement of the toner particles through direct contact at every stage of image development ensures the highest level of accuracy and precision quality in the production of every color or black & white image. The NEW 15.6" KIP touchscreen has true smart tablet easy function and offers unmatched productivity with intuitive features to brilliantly automate Print, Copy, and Scan workflow.

System Features

- 2 integrated media rolls
- KIP System K Software Suite
- 600 x 2400 dpi resolution
- Integrated touchscreen
- PC & web based submission tools
- Advanced user management
- Low operational costs
- Minimal operator training
- Energy saving technologies

LOW VOLUME - 6 B&W / 6 Color D / A1 PPM | 360 Prints Per Hour
Includes Dock to Dock Freight, Training & Start-Up Toner:
C,M,Y,K & Toner Receptacle

Item Number	Product	MSRP	DIR Customer
SYS730C	2 Roll Color Print System 6/6 - Top Stacking	\$32,700	\$25,506
SYS740C	2 Roll Multi-function Color System 6/6 - Top Stacking	\$35,000	\$27,300

APPLICATION / SOFTWARE OPTIONS

DIGPDF-700K	PDF Format Printing Keycode - Includes support for Postscript levels 1, 2 & 3, PDF 1.7, sets printing, collation, multi page support, image sizing & scaling, recall, viewing, file conversion & unlimited site license.	\$795	\$620.10
K1AKC00070	KIP Accounting and Cost Center - The KIP Accounting Center consolidates control of user data and printing rules for all Copy, Print and Scan activities. KIP Accounting includes (RBAC) Role Based Access Control for a smarter way to apply rules for specific user accessibility assigned by the system administrator. The KIP Cost Center application retrieves extensive log files directly from KIP Systems and automatically generates production reports for user, project and department level accounting data.	\$727	\$567.06

KIP 700 C SERIES TONER

Item Number	Product	MSRP	DIR Customer
Z480970011	KIP 600/700 Series - Black Toner - 2 x 500 gram cartridges	\$212	\$165.36
Z480970021	KIP 600/700 Series - Cyan Toner - 2 x 500 gram cartridges	\$212	\$165.36
Z480970031	KIP 600/700 Series - Magenta Toner - 2 x 500 gram cartridges	\$212	\$165.36
Z480970041	KIP 600/700 Series - Yellow Toner - 2 x 500 gram cartridges	\$212	\$165.36
Z358080350	Toner Receptacles (4 units)	\$94	\$73.32



State of the Art
TONER TECHNOLOGY

KIP 700 C SERIES

MID VOLUME SYSTEMS



KIP 750 C | KIP 760 C | KIP 770 C
KIP 780 C | KIP 790 C

8 B&W | 6 COLOR 'D' / 'A1' PRINTS PER MINUTE

From our powerful print engines and smart software technology to our incredible image quality we have designed a KIP 700 C Series to meet the demands of today and tomorrow's print requirements. Advanced toner technology controls the image with color registration that delivers smooth color and expressive black & white image quality. True black printing ensures bold rich lines and fine details with pinpoint accuracy that are easy to read.

System Features

- 2 or 4 integrated media rolls
- KIP System K Software Suite
- 600 x 2400 dpi resolution
- Integrated touchscreen
- PC & web based submission tools
- Advanced user management
- Low operational costs
- Minimal operator training
- Energy saving technologies

MID VOLUME - 8 B&W / 6 Color D / A1 PPM | 480 B&W / 360 Color Prints Per Hour
Includes Dock to Dock Freight, Training & Start-Up Toner:
C,M,Y,K & Toner Receptacle

Item Number	Product	MSRP	DIR Customer
SYS750C	2 Roll Color Print System 8/6 - Top Stacking	\$36,200	\$28,236
SYS760C	2 Roll Multi-function Color System 8/6 - Top Stacking	\$39,800	\$31,044
SYS770C	4 Roll Color Print System 8/6 - Top Stacking	\$39,800	\$31,044
SYS780C	4 Roll Multi-function Color System 8/6 - Top Stacking	\$43,300	\$33,774
SYS790C	4 Roll Color Production System 8/6 with 2300 Scanner & Stand - Top Stacking	\$53,700	\$41,886

KIP 700 C SERIES PRINTER OPTIONS

MACH700S	KIP 700 Stacker	\$3,000	\$2,340
----------	-----------------	---------	---------

APPLICATION / SOFTWARE OPTIONS

DIGPDF-700K	PDF Format Printing Keycode - Includes support for Postscript levels 1, 2 & 3, PDF 1.7, sets printing, collation, multi page support, image sizing & scaling, recall, viewing, file conversion & unlimited site license.	\$795	\$620.10
K1AKC00070	KIP Accounting and Cost Center - The KIP Accounting Center consolidates control of user data and printing rules for all Copy, Print and Scan activities. KIP Accounting includes (RBAC) Role Based Access Control for a smarter way to apply rules for specific user accessibility assigned by the system administrator. The KIP Cost Center application retrieves extensive log files directly from KIP Systems and automatically generates production reports for user, project and department level accounting data.	\$727	\$567.06

KIP 700 C SERIES TONER

Item Number	Product	MSRP	DIR Customer
Z480970011	KIP 600/700 Series - Black Toner - 2 x 500 gram cartridges	\$212	\$165.36
Z480970021	KIP 600/700 Series - Cyan Toner - 2 x 500 gram cartridges	\$212	\$165.36
Z480970031	KIP 600/700 Series - Magenta Toner - 2 x 500 gram cartridges	\$212	\$165.36
Z480970041	KIP 600/700 Series - Yellow Toner - 2 x 500 gram cartridges	\$212	\$165.36
Z358080350	Toner Receptacles (4 units)	\$94	\$73.32

Print Systems

750

2 ROLL

OPTIONAL STACKING

Multifunction Systems

760

2 ROLL

OPTIONAL STACKING

Production Systems

790

4 ROLL

OPTIONAL STACK/FOLD

770

4 ROLL

OPTIONAL STACK/FOLD

780

4 ROLL

OPTIONAL STACK/FOLD



KIP 700 C SERIES

HIGH DEMAND SYSTEMS



700 C SERIES

KIP 755 C | KIP 765 C | KIP 775 C
KIP 785 C | KIP 795 C

12 B&W | 10 COLOR 'D' / 'A1' PRINTS PER MINUTE

The NEW KIP 700 C Series 15.6" KIP touchscreen has true smart tablet easy function and offers unmatched productivity with intuitive features to brilliantly automate Print, Copy, and Scan workflow. Workflow Automation simplifies everyday multi-step printing processes. Produce sets of black & white, color, or mixed sets of images and automatically, size, rotate or collate with touch of your fingertips.

System Features

- 2 or 4 integrated media rolls
- KIP System K Software Suite
- 600 x 2400 dpi resolution
- Integrated touchscreen
- PC & web based submission tools
- Advanced user management
- Low operational costs
- Minimal operator training
- Energy saving technologies

HIGH DEMAND - 12 B&W / 10 Color D / A1 PPM | 720 B&W / 600 Color Prints Per Hour
Includes Dock to Dock Freight, Training & Start-Up Toner:
C,M,Y,K & Toner Receptacle

SKU/Part Number	Product	MSRP	DIR Customer
SYS755C	2 Roll Color Print System 12/10 - Top Stacking	\$40,900	\$31,902
SYS765C	2 Roll Multi-function Color System 12/10 - Top Stacking	\$44,400	\$34,632
SYS775C	4 Roll Color Print System 12/10 - Top Stacking	\$44,400	\$34,632
SYS785C	4 Roll Multi-function Color System 12/10 - Top Stacking	\$47,900	\$37,362
SYS795C	4 Roll Color Production System 12/10 with 2300 Scanner & Stand - Top Stacking	\$58,300	\$45,474

KIP 700 C SERIES PRINTER OPTIONS

MACH700S	KIP 700 Stacker	\$3,000	\$2,340
----------	-----------------	---------	---------

APPLICATION / SOFTWARE OPTIONS

DIGPDF-700K	PDF Format Printing Keycode - Includes support for Postscript levels 1, 2 & 3, PDF 1.7, sets printing, collation, multi page support, image sizing & scaling, recall, viewing, file conversion & unlimited site license.	\$795	\$620.10
K1AKC00070	KIP Accounting and Cost Center - The KIP Accounting Center consolidates control of user data and printing rules for all Copy, Print and Scan activities. KIP Accounting includes (RBAC) Role Based Access Control for a smarter way to apply rules for specific user accessibility assigned by the system administrator. The KIP Cost Center application retrieves extensive log files directly from KIP Systems and automatically generates production reports for user, project and department level accounting data.	\$727	\$567.06

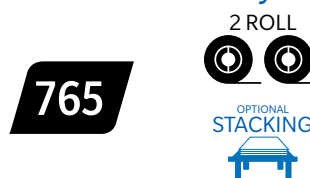
KIP 700 C SERIES TONER

SKU/Part Number	Product	MSRP	DIR Customer
Z480970011	KIP 600/700 Series - Black Toner - 2 x 500 gram cartridges	\$212	\$165.36
Z480970021	KIP 600/700 Series - Cyan Toner - 2 x 500 gram cartridges	\$212	\$165.36
Z480970031	KIP 600/700 Series - Magenta Toner - 2 x 500 gram cartridges	\$212	\$165.36
Z480970041	KIP 600/700 Series - Yellow Toner - 2 x 500 gram cartridges	\$212	\$165.36
Z358080350	Toner Receptacles (4 units)	\$94	\$73.32

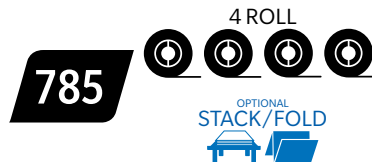
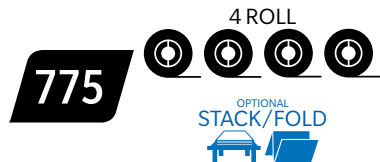
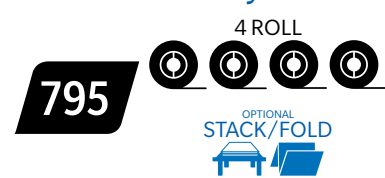
Print Systems



Multifunction Systems



Production Systems



KIP 970



High Demand Production Color Print System

KIP 970 Transforms High Demand Print Efficiency! The KIP 970 high demand production print system is compact and scalable to maximize space. The KIP 970 boosts productivity optimizing color and black & white digital print efficiency to easily satisfy customers with faster turn-around times and print quality that exceeds expectations. Point and click to effortlessly meet production timelines. Anytime, anywhere printer status updates can be received on mobile devices via email.

System Features

- 20 ppm in b&w / 16 ppm in color
- 4 integrated media rolls
- KIP System K Software Suite
- 600 x 1800 dpi resolution
- Integrated touchscreen
- PC & web based submission tools
- Extended print lengths for maximum productivity
- 7,800 sq. ft. / 725 m² Media Capacity
- Accepts 4 x 650' / 200 linear meter Rolls
- High Capacity Toner Cartridges

KIP 970 - (4) Roll | 20 D / A1 PPM in B&W | 16 D / A1 PPM in Color | Includes Stacker
 960 Prints Per Hour in Color | 1,200 Prints Per Hour in B&W

Includes Dock to Dock Freight, Training & Start-Up Toner:
 1 x 1,500 gram cartridges each C,M,Y,K & Toner Receptacle

Item Number	Product	MSRP	DIR Customer
SYS970K	KIP 970 Including professional edge alignment stacking, 4 Roll High Demand Print System with KIP 900 Stacker	\$59,000	\$46,020

APPLICATION / SOFTWARE OPTIONS

DIGPDF-900K	PDF Format Printing Keycode - Includes support for Postscript levels 1, 2 & 3, PDF 1.7, sets printing, collation, multi page support, image sizing & scaling, recall, viewing, file conversion & unlimited site license.	\$1,105	\$861.90
K1AKC00070	KIP Accounting and Cost Center - The KIP Accounting Center consolidates control of user data and printing rules for all Copy, Print and Scan activities. KIP Accounting includes (RBAC) Role Based Access Control for a smarter way to apply rules for specific user accessibility assigned by the system administrator. The KIP Cost Center application retrieves extensive log files directly from KIP Systems and automatically generates production reports for user, project and department level accounting data.	\$727	\$567.06

KIP 900 SERIES TONER

Item Number	Product	MSRP	DIR Customer
Z400970021	KIP 900 Series - Cyan Toner 2 x 1,500 gram cartridges	\$565	\$440.70
Z400970031	KIP 900 Series - Magenta Toner 2 x 1,500 gram cartridges	\$565	\$440.70
Z400970041	KIP 900 Series - Yellow Toner 2 x 1,500 gram cartridges	\$565	\$440.70
Z400970011	KIP 900 Series - Black Toner 2 x 1,500 gram cartridges	\$486	\$379.08
Z358080350	Toner Receptacles (4 units)	\$94	\$73.32

High Demand CONSISTENT PRODUCTIVITY



KIP 980



900 SERIES

High Demand Production Multifunction System with CIS Scanner

KIP 980 Intelligently Accelerates Productivity! The KIP 980 multifunction print system delivers versatile print, copy and scan productivity designed for high demand enterprise in-plant and production environments. The high demand KIP 980 is ideal for a comprehensive range of wide format documents including technical prints, maps, point of sale posters and banners with unmatched image durability.

System Features

- 20 ppm in b&w / 16 ppm in color
- 4 integrated media rolls
- KIP System K Software Suite
- 600 x 1800 dpi resolution
- Integrated touchscreen
- PC & web based submission tools
- Extended print lengths for maximum productivity
- 7,800 sq. ft. / 725 m² Media Capacity
- Accepts 4 x 650' / 200 linear meter Rolls
- High Capacity Toner Cartridges

KIP 980 - (4) Roll | 20 D / A1 PPM in B&W | 16 D / A1 PPM in Color | Includes Stacker
960 Prints Per Hour in Color | 1,200 Prints Per Hour in B&W

Includes Dock to Dock Freight, Training & Start-Up Toner:
1 x 1,500 gram cartridges each C,M,Y,K & Toner Receptacle

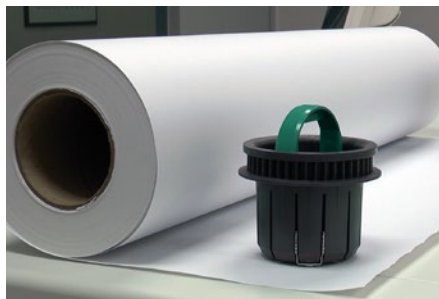
Item Number	Product	MSRP	DIR Customer
SYS980K	KIP 980 Including professional edge alignment stacking, 4 Roll High Demand Print System with KIP 900 Stacker, 720 CIS Scanner & scanner stand	\$63,100	\$49,218

APPLICATION / SOFTWARE OPTIONS

DIGPDF-900K	PDF Format Printing Keycode - Includes support for Postscript levels 1, 2 & 3, PDF 1.7, sets printing, collation, multi page support, image sizing & scaling, recall, viewing, file conversion & unlimited site license.	\$1,105	\$861.90
K1AKC00070	KIP Accounting and Cost Center - The KIP Accounting Center consolidates control of user data and printing rules for all Copy, Print and Scan activities. KIP Accounting includes (RBAC) Role Based Access Control for a smarter way to apply rules for specific user accessibility assigned by the system administrator. The KIP Cost Center application retrieves extensive log files directly from KIP Systems and automatically generates production reports for user, project and department level accounting data.	\$727	\$567.06

KIP 900 SERIES TONER

Item Number	Product	MSRP	DIR Customer
Z400970021	KIP 900 Series - Cyan Toner 2 x 1,500 gram cartridges	\$565	\$440.70
Z400970031	KIP 900 Series - Magenta Toner 2 x 1,500 gram cartridges	\$565	\$440.70
Z400970041	KIP 900 Series - Yellow Toner 2 x 1,500 gram cartridges	\$565	\$440.70
Z400970011	KIP 900 Series - Black Toner 2 x 1,500 gram cartridges	\$486	\$379.08
Z358080350	Toner Receptacles (4 units)	\$94	\$73.32



KIP 990



High Demand Production Multifunction System with CCD Scanner

KIP 990 Brilliantly Advanced Multifunction Production Performance! The KIP 990 advanced multifunction high demand production system delivers the brilliant quality your customers expect. Print on demand and short runs are finished in record time, improving customer service and satisfaction. Benchmark multifunction performance for professional production centers.

System Features

- 20 ppm in b&w / 16 ppm in color
- 4 integrated media rolls
- KIP System K Software Suite
- 600 x 1800 dpi resolution
- Integrated touchscreen
- PC & web based submission tools
- Extended print lengths for maximum productivity
- 7,800 sq. ft. / 725 m² Media Capacity
- Accepts 4 x 650' Rolls
- High Capacity Toner Cartridges

KIP 990 - (4) Roll | 20 D / A1 PPM in B&W | 16 D / A1 PPM in Color | Includes Stacker
960 Prints Per Hour in Color | 1,200 Prints Per Hour in B&W

Includes Dock to Dock Freight, Training & Start-Up Toner:
1 x 1,500 gram cartridges each C,M,Y,K & Toner Receptacle

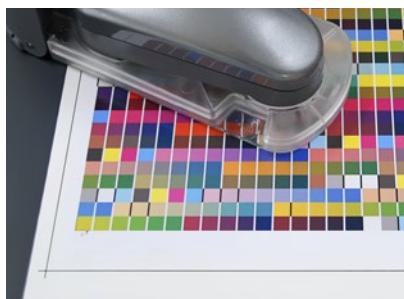
Item Number	Product	MSRP	DIR Customer
SYS990K	KIP 990 Including professional edge alignment stacking, 4 Roll High Demand Multifunction System with KIP 990 Stacker, 2300 CCD Scanner & scanner stand	\$74,100	\$57,798

APPLICATION / SOFTWARE OPTIONS

DIGPDF-900K	PDF Format Printing Keycode - Includes support for Postscript levels 1, 2 & 3, PDF 1.7, sets printing, collation, multi page support, image sizing & scaling, recall, viewing, file conversion & unlimited site license.	\$1,105	\$861.90
K1AKC00070	KIP Accounting and Cost Center - The KIP Accounting Center consolidates control of user data and printing rules for all Copy, Print and Scan activities. KIP Accounting includes (RBAC) Role Based Access Control for a smarter way to apply rules for specific user accessibility assigned by the system administrator. The KIP Cost Center application retrieves extensive log files directly from KIP Systems and automatically generates production reports for user, project and department level accounting data.	\$727	\$567.06

KIP 990 SERIES TONER

Item Number	Product	MSRP	DIR Customer
Z400970021	KIP 990 Series - Cyan Toner 2 x 1,500 gram cartridges	\$565	\$440.70
Z400970031	KIP 990 Series - Magenta Toner 2 x 1,500 gram cartridges	\$565	\$440.70
Z400970041	KIP 990 Series - Yellow Toner 2 x 1,500 gram cartridges	\$565	\$440.70
Z400970011	KIP 990 Series - Black Toner 2 x 1,500 gram cartridges	\$486	\$379.08
Z358080350	Toner Receptacles (4 units)	\$94	\$73.32





KIP B&W Series



KIP 71 SERIES (1) Roll



Multifunction Single Footprint System

The cloud connected productivity of the KIP 7170 system is designed to satisfy the most demanding needs of the decentralized workforce. The KIP 7170 easily integrates into the daily workflow with a range of simple to use applications that allows users the flexibility to create, manage and distribute projects with confidence. The best in class rating and proven power of the KIP 7170 also make it the ideal solution to support the print, copy and scan demand in a centralized print environment.

System Features

- 4 or 6 D / A1 size prints per minute
- 240 or 360 prints per hour
- 1 integrated media roll
- KIP System K Software Suite
- 600 x 2400 dpi resolution
- Integrated touchscreen
- PC & web based submission tools
- Advanced user management
- Low operational costs
- Energy saving technologies

KIP 7170 MFP SYSTEM - (1) ROLL | 4 D / A1 PPM | 240 Prints Per Hour
Includes Dock to Dock Freight, Training & Start-Up Toner: 2 x 400 gram cartridges

Item Number	Product	MSRP	DIR Customer
SYS7171K4	1 Roll Multifunction System	\$20,600	\$16,068

KIP 7170 MFP SYSTEM - (1) ROLL | 6 D / A1 PPM | 360 Prints Per Hour
Includes Dock to Dock Freight, Training & Start-Up Toner: 2 x 400 gram cartridges

Item Number	Product	MSRP	DIR Customer
SYS7171K6	1 Roll Multifunction System	\$22,700	\$17,706

KIP 71 G SERIES PRINTER OPTIONS

EQAC070	Rear Print Receiving Tray *May be used in conjunction with top stacking	\$950	\$741
EQAC071	Original and Print Receiving Tray	\$1,350	\$1,053
MACH1200S	KIP 1200 Auto Stacker (Includes Print System Connection Kit)	\$2,700	\$2,106

APPLICATION / SOFTWARE OPTIONS

DIGPDF-7170K	PDF Format Printing Keycode - Includes support for Postscript levels 1, 2 & 3, PDF 1.7, sets printing, collation, multi page support, image sizing & scaling, recall, viewing, file conversion & unlimited site license.	\$973	\$758.94
K1AKC00070	KIP Accounting and Cost Center - The KIP Accounting Center consolidates control of user data and printing rules for all Copy, Print and Scan activities. KIP Accounting includes (RBAC) Role Based Access Control for a smarter way to apply rules for specific user accessibility assigned by the system administrator. The KIP Cost Center application retrieves extensive log files directly from KIP Systems and automatically generates production reports for user, project and department level accounting data.	\$727	\$567.06

KIP 71 SERIES TONER

Item Number	Product	MSRP	DIR Customer
Z340970010	KIP 71 Series Toner - 2 x 400 gram cartridges	\$319	\$248.82

Optimum
**WORKGROUP
PERFORMANCE**



KIP 71 SERIES (2) Roll



Multifunction Single Footprint System

The cloud connected productivity of the KIP 7170 system is designed to satisfy the most demanding needs of the decentralized workforce. The KIP 7170 easily integrates into the daily workflow with a range of simple to use applications that allows users the flexibility to create, manage and distribute projects with confidence. The best in class rating and proven power of the KIP 7170 also make it the ideal solution to support the print, copy and scan demand in a centralized print environment.

System Features

- 4 or 6 D / A1 size prints per minute
- 240 or 360 prints per hour
- 2 integrated media rolls
- KIP System K Software Suite
- 600 x 2400 dpi resolution
- Integrated touchscreen
- PC & web based submission tools
- Advanced user management
- Low operational costs
- Energy saving technologies

KIP 7170 MFP SYSTEM - (2) ROLL | 4 D / A1 PPM | 240 Prints Per Hour
Includes Dock to Dock Freight, Training & Start-Up Toner: 2 x 400 gram cartridges

Item Number	Product	MSRP	DIR Customer
SYS7172K4	2 Roll Multifunction System	\$23,800	\$18,564

KIP 7170 MFP SYSTEM - (2) ROLL | 6 D / A1 PPM | 360 Prints Per Hour
Includes Dock to Dock Freight, Training & Start-Up Toner: 2 x 400 gram cartridges

Item Number	Product	MSRP	DIR Customer
SYS7172K6	2 Roll Multifunction System	\$26,000	\$20,280

KIP 71 G SERIES PRINTER OPTIONS

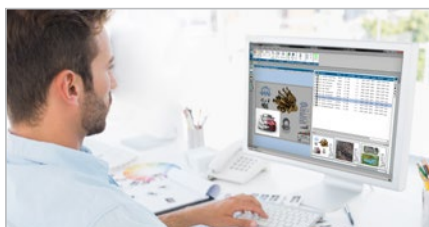
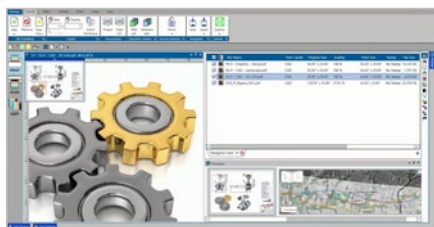
EQAC070	Rear Print Receiving Tray *May be used in conjunction with top stacking	\$950	\$741
EQAC071	Original and Print Receiving Tray	\$1,350	\$1,053
MACH1200S	KIP 1200 Auto Stacker (Includes Print System Connection Kit)	\$2,700	\$2,106

APPLICATION / SOFTWARE OPTIONS

DIGPDF-7170K	PDF Format Printing Keycode - Includes support for Postscript levels 1, 2 & 3, PDF 1.7, sets printing, collation, multi page support, image sizing & scaling, recall, viewing, file conversion & unlimited site license.	\$973	\$758.94
K1AKC00070	KIP Accounting and Cost Center - The KIP Accounting Center consolidates control of user data and printing rules for all Copy, Print and Scan activities. KIP Accounting includes (RBAC) Role Based Access Control for a smarter way to apply rules for specific user accessibility assigned by the system administrator. The KIP Cost Center application retrieves extensive log files directly from KIP Systems and automatically generates production reports for user, project and department level accounting data.	\$727	\$567.06

KIP 71 SERIES TONER

Item Number	Product	MSRP	DIR Customer
Z340970010	KIP 71 Series Toner - 2 x 400 gram cartridges	\$319	\$248.82



KIP 75 SERIES



75 G SERIES

KIP 7570 | KIP 7580

The innovative space saving design of the KIP 75 Series with top stacking delivers increased speed, impeccable b&w print quality, setting new performance standards to easily meet project timelines while reducing cost. High Definition Print Technology delivers rich expressive black density with advanced grayscale and fine line enhancement. KIP Smart Print & Scan are flexible approaches to delivering print and scan services – one that responds to mobile business needs by providing a driverless cloud solution.

System Features

- 8 or 10 D / A1 size prints per minute
- 480 or 600 prints per hour
- 2 or 4 integrated media rolls
- KIP System K Software Suite
- 600 x 2400 dpi resolution
- Integrated touchscreen
- PC & web based submission tools
- Advanced user management
- Low operational costs
- Energy saving technologies

KIP 7570 PRINT SYSTEM - 10 D / A1 PPM | 600 Prints Per Hour Includes Dock to Dock Freight, Training & Start-Up Toner: 2 x 600 gram cartridges

Print systems include integrated top stacking.
Additional production stacking options available in the 75 Series options section.

Item Number	Product	MSRP	DIR Customer
SYS7572KP10	2 Roll Network Print System with integrated top stacking print tray	\$30,100	\$23,478.00
SYS7574KP10	4 Roll Network Print System with integrated top stacking print tray	\$32,800	\$25,584.00

KIP 7580 MFP SYSTEM - 8 D / A1 PPM | 480 Prints Per Hour | Includes Start-Up Toner Includes Dock to Dock Freight, Training & Start-Up Toner: 2 x 600 gram cartridges

Multifunction print systems include integrated CIS color scanner & top stacking.
Additional production stacking options available in the 75 Series options section.

Item Number	Product	MSRP	DIR Customer
SYS7582K8	2 Roll MFP System with CIS Scanner and integrated top stacking print tray	\$35,100	\$27,378
SYS7584K8	4 Roll MFP System with CIS Scanner and integrated top stacking print tray	\$31,100	\$24,258

KIP 7580 MFP SYSTEM - 10 D / A1 PPM | 600 Prints Per Hour | Includes Start-Up Toner Includes Dock to Dock Freight, Training & Start-Up Toner: 2 x 600 gram cartridges

Multifunction print systems include integrated CIS color scanner & top stacking.
Additional production stacking options available in the 75 Series options section.

Item Number	Product	MSRP	DIR Customer
SYS7582K10	2 Roll MFP System with CIS Scanner and integrated top stacking print tray	\$37,800	\$29,484
SYS7584K10	4 Roll MFP System with CIS Scanner and integrated top stacking print tray	\$33,800	\$26,364

KIP 75 G SERIES PRINTER OPTIONS

MACH1200S	KIP 1200 Auto Stacker (Includes Print System Connection Kit)	\$2,700	\$2,106
-----------	--	---------	---------

APPLICATION / SOFTWARE OPTIONS

DIGPDF-7570K	PDF Format Printing Keycode - Includes support for Postscript levels 1, 2 & 3, PDF 1.7, sets printing, collation, multi page support, image sizing & scaling, recall, viewing, file conversion & unlimited site license.	\$1,254	\$978.12
K1AKC00070	KIP Accounting and Cost Center - The KIP Accounting Center consolidates control of user data and printing rules for all Copy, Print and Scan activities. KIP Accounting includes (RBAC) Role Based Access Control for a smarter way to apply rules for specific user accessibility assigned by the system administrator. The KIP Cost Center application retrieves extensive log files directly from KIP Systems and automatically generates production reports for user, project and department level accounting data.	\$727	\$567.06

KIP 75 SERIES TONER

Item Number	Product	MSRP	DIR Customer
Z440970010	KIP 75 Series Toner - 2 x 600 gram cartridges	\$376	\$293.28

KIP 79 SERIES



79 G SERIES

KIP 7970 | KIP 7980 | KIP 7990

The KIP 79 Series print systems accelerate print production possibilities with consistent speed productivity. High Definition Print Technology delivers rich expressive black density with advanced grayscale and fine line enhancement. The cloud connected KIP 79 Series is the most productive b&w print system in its class, delivering cost effective operation, increased hourly productivity, daily reliability and long term performance that makes this system the perfect solution for centralized and decentralized production environments.

System Features

- 14 D / A1 size prints per minute
- 840 prints per hour
- 4 integrated media rolls
- KIP System K Software Suite
- 600 x 2400 dpi resolution
- Integrated touchscreen
- PC & web based submission tools
- Advanced user management
- Low operational costs
- Minimal operator training
- Energy saving technologies

KIP 7970 PRINT SYSTEM - 14 D / A1 PPM | 840 Prints Per Hour

Includes Dock to Dock Freight, Training & Start-Up Toner: 2 x 700 gram cartridges

Print systems include integrated top stacking.
Additional production stacking options available in the 79 Series options section.

Item Number	Product	MSRP	DIR Customer
SYS7974KP14	4 Roll Network Print System with integrated top stacking print tray	\$39,200	\$30,576

KIP 7980 MFP SYSTEM - 14 D / A1 PPM | 840 Prints Per Hour

Includes Dock to Dock Freight, Training & Start-Up Toner: 2 x 700 gram cartridges

Multifunction print systems include integrated CIS color scanner & top stacking.
Additional production stacking options available in the 79 Series options section.

Item Number	Product	MSRP	DIR Customer
SYS7984K14	4 Roll MFP System with CIS Scanner and integrated top stacking print tray	\$44,600	\$34,788

KIP 7990 MFP PRODUCTION SYSTEM - 14 D / A1 PPM | 840 Prints Per Hour

Includes Dock to Dock Freight, Training & Start-Up Toner: 2 x 700 gram cartridges

Production Multifunction print systems include the KIP 2300 CCD color scanner.
This configuration requires the selection of a production stacking solution.

Item Number	Product	MSRP	DIR Customer
SYS7994K14	4 Roll Production System with CCD Scanner and integrated top stacking print tray (Dual Footprint)	\$55,400	\$43,212

- * 7990 with Folder (KIPF02879) requires a dual footprint configuration. Please order KIP Scanner Stand item # Z298080030.
- * 7990 as a single footprint requires a rear stacking option, order item # MACH1200S

KIP 79 G SERIES PRINTER OPTIONS

MACH1200S	KIP 1200 Auto Stacker (Includes Print System Connection Kit)	\$2,700	\$2,106
-----------	--	---------	---------

APPLICATION / SOFTWARE OPTIONS

DIGPDF-7970K	PDF Format Printing Keycode - Includes support for Postscript levels 1, 2 & 3, PDF 1.7, sets printing, collation, multi page support, image sizing & scaling, recall, viewing, file conversion & unlimited site license.	\$2,135	\$1,665.30
K1AKC00070	KIP Accounting and Cost Center - The KIP Accounting Center consolidates control of user data and printing rules for all Copy, Print and Scan activities. KIP Accounting includes (RBAC) Role Based Access Control for a smarter way to apply rules for specific user accessibility assigned by the system administrator. The KIP Cost Center application retrieves extensive log files directly from KIP Systems and automatically generates production reports for user, project and department level accounting data.	\$727	\$567.06

KIP 79 SERIES TONER

Item Number	Product	MSRP	DIR Customer
Z370970050	KIP 79 Series Toner - 4 x 700 gram cartridges	\$707	\$551.46



Accessories



KIP 2300



Production Color and B&W Scan System

A stand-alone scan to file system with high resolution image quality and production speed scanning for document archival. Face up or face down stream feed scanning for standard documents or board function for mounted originals up to 0.6" thick. Advanced CCD (Charge Coupling Device) image capture up to 600x600 DPI with USB 3.0 Superspeed connectivity.

Key KIP ImagePro Software Features:

- Color/grayscale/b&w image capture
- Color and b&w file formats: JPEG, single and multipage PDF/PDF-A/TIF, DWF, Cals Group 4
- Connect to KIP System K color and b&w MFP's and Printers for copy and print
- **Standard Mode:** Scan Quality Presets, Auto Deskew
- **Expanded Mode:** Professional Color Editor and Correction Features, Image clean up capabilities using Digital Dropper with black point/white point, Rapidly rename files post scanning, High Definition Viewer with Advanced Area of Interest

System Features

- 600x600 dpi image capture resolution
- 1 bit b&w, 8 bit gray or 24 bit color depth
- Scan speeds up to 12 ips in b&w and up to 6 ips in color
- Advanced CCD camera based image capture, no warm up time
- USB 3.0 Super Speed Data Transfer
- Face-up/face-down document scanning
- Image capture area up to 36" wide
- Real Time Thresholding Technology (RTT)
- Energy program and RoHS Approved

KIP 2300 SCANNER Includes Dock to Dock Freight, Training

Item Number	Product	MSRP	DIR Customer
SYS2300IP	KIP 2300 CCD Scanner includes System K Image Pro software for color and b&w scan to file. Connect directly to System K Printer or via network for Copy and Print functionality.	\$19,000	\$14,820

KIP 2300 SCANNER OPTIONS

Z298080030	KIP Scanner Stand includes an integrated PC storage compartment with Monitor and Keyboard attachment.	\$1,341	\$1,045.98
------------	---	---------	------------

PC REQUIREMENTS FOR KIP SCANNER

KIP Scanning systems require customer supplied PC with the following specifications:

- Quad Core Processor (such as an Intel i5 or higher)
- Windows 10 or 11
- 8GB RAM
- 1 TB Hard Drive
- 1 Gig RJ45 LAN Port
- One USB 3.0 Port (scanner connection)
- 27" Wide Screen Flat panel monitor
- USB Keyboard and mouse



KIP 720



Convenience Color and B&W Scan System

The KIP 720 stand-alone color and b&w scanner incorporates the latest in document imaging technology for accurate, high quality scans. The KIP 720 scanner delivers large-format scanning convenience with quick scanning speeds and image accuracy. The KIP 720 (Contact Image Sensor) technology scanning method enables high resolution, high speed image capture with energy saving operation in a light, compact and portable design.

System Features

- 600x600 dpi image capture resolution
- 1 bit b&w, 8 bit gray or 24 bit color depth
- Scan speeds up to 5 ips in b&w and up to 2 ips in color
- Enhanced CIS scan technology, no warm up time
- Compact and lightweight
- USB 2.0 Data Transfer
- Face-up document scanning
- Image capture area up to 36" wide
- Real Time Thresholding Technology (RTT)
- Energy program and RoHS Approved

Key KIP ImagePro Software Features:

- Color/grayscale/b&w image capture
- Color and b&w file formats: JPEG, single and multipage PDF/PDF-A/TIF, DWF, Cals Group 4
- Connect to KIP System K color and b&w MFP's and Printers for copy and print
- **Standard Mode:** Scan Quality Presets, Auto Deskew
- **Expanded Mode:** Professional Color Editor and Correction Features, Image clean up capabilities using Digital Dropper with black point/white point, Rapidly rename files post scanning, High Definition Viewer with Advanced Area of Interest

KIP 720 SCANNER Includes Dock to Dock Freight, Training

Item Number	Product	MSRP	DIR Customer
SYS720IP	KIP 720 CIS Scanner includes System K Image Pro software for color and b&w scan to file. Connect directly to System K Printer or via network for Copy and Print functionality.	\$9,500	\$7,410

KIP 720 SCANNER OPTIONS

Z298080030	KIP Scanner Stand includes an integrated PC storage compartment with Monitor and Keyboard attachment.	\$1,341	\$1,045.98
------------	---	---------	------------

PC REQUIREMENTS FOR KIP SCANNER

KIP Scanning systems require customer supplied PC with the following specifications:

- Quad Core Processor (such as an Intel i5 or higher)
- Windows 10 or 11
- 8GB RAM
- 1 TB Hard Drive
- 1 Gig RJ45 LAN Port
- One USB Port (scanner connection)
- 27" Wide Screen Flat panel monitor
- USB Keyboard and mouse



KIPFold

KIP Folding Systems

The KIPFold folding systems are engineered for folding with seamless integration to the KIP print systems. Automating large document finishing by providing folding and stacking in an efficient and compact design. Folded document packets are crisp, professional and ready for distribution.



System Features

- Automatic title block detection
- Automatic fold by page size
- Customized fold presets
- Advanced technical interface
- Full bi-directional communication
- Superior job recovery functionality
- Folds metric & imperial standard sizes
- Portrait and landscape packet styles
- Integrated flat stacking
- Offline manual folding
- Optional unlimited length fan fold

KIPFOLD 2800 Includes Dock to Dock Freight, Training

Item Number	Product	MSRP	DIR Customer
MACHFO2871	KIPFold 2800 for KIP 71 G Series Systems	\$40,300	\$31,434
MACHFO2875	KIPFold 2800 for KIP 75 G Series Systems	\$40,300	\$31,434
MACHFO2879	KIPFold 2800 for KIP 79 G Series Systems	\$40,300	\$31,434
MACHFO2870	KIPFold 2800 for KIP 700 C Series Systems	\$40,300	\$31,434
MACHFO2890	KIPFold 2800 for KIP 900 C Series Systems	\$40,300	\$31,434

KIPFOLD 2800 OPTIONS

300KA218	KIPFold 2800 Option: Extended Length Fanfold	\$5,383	\$4,198.74
KF10108600	KIP FOLD 2800 Roll Tray Fan Kit	\$728	\$567.84
KF10112280	KIP FOLD 2800 MapFold 10CM	\$4,848	\$3,781.44

KIPFOLD 1800 Includes Dock to Dock Freight, Training

Item Number	Product	MSRP	DIR Customer
MACHFO1871	KIPFold 1800 for KIP 71 G Series Systems	\$33,500	\$26,130
MACHFO1875	KIPFold 1800 for KIP 75 G Series Systems	\$33,500	\$26,130
MACHFO1879	KIPFold 1800 for KIP 79 G Series Systems	\$33,500	\$26,130
MACHFO1870	KIPFold 1800 for KIP 700 C Series Systems	\$33,500	\$26,130

KIPFOLD 1800 OPTIONS

KF10110530	KIPFold 1800 Offline Feed Table	\$2,418	\$1,886.04
------------	---------------------------------	---------	------------

KIPFOLD 1600 Includes Dock to Dock Freight, Training

Item Number	Product	MSRP	DIR Customer
MACHFO1600	KIPFold 1600 (Includes tablet display & catch tray)	\$13,600	\$10,608

KIPFOLD 1600 OPTIONS

KF10112230	MapFold 10CM	\$1,209	\$943.02
------------	--------------	---------	----------



KIPFold 2800



KIPFold 1800



KIPFold 1600



Services



KIP SUGGESTED MAINTENANCE PLANS

KIP 700 C SERIES

		Year 1				Year 2				Year 3				Year 4				Year 5				
Model	Plan	Monthly Cost	B&W Allowance	B&W Excess	Color Excess	Monthly Cost	B&W Allowance	BW Excess	Color Excess	Monthly Cost	B&W Allowance	BW Excess	Color Excess	Monthly Cost	B&W Allowance	BW Excess	Color Excess	Monthly Cost	B&W Allowance	BW Excess	Color Excess	
730/740	Plan 1	MSRP:	\$175.00	2,500	0.055	0.066	\$193.00	2,500	0.061	0.073	\$212.00	2,500	0.067	0.08	\$233.00	2,500	0.074	0.088	\$256.00	2,500	0.081	0.097
		DIR Customer:	\$136.50	2,500	0.0429	0.05148	\$150.54	2,500	0.04758	0.05694	\$165.36	2,500	0.05226	0.0624	\$181.74	2,500	0.05772	0.06864	\$199.68	2,500	0.06318	0.07566
	Plan 2	MSRP:	\$285.00	5,000	0.033	0.044	\$314.00	5,000	0.036	0.048	\$345.00	5,000	0.04	0.053	\$380.00	5,000	0.044	0.058	\$418.00	5,000	0.048	0.064
		DIR Customer:	\$222.30	5,000	0.02574	0.03432	\$244.92	5,000	0.02808	0.03744	\$269.10	5,000	0.0312	0.04134	\$296.40	5,000	0.03432	0.04524	\$326.04	5,000	0.03744	0.04992
75x / 76x / 77x / 78x	Plan 1	MSRP:	\$175.00	2,500	0.055	0.066	\$193.00	2,500	0.061	0.073	\$212.00	2,500	0.067	0.08	\$233.00	2,500	0.074	0.088	\$256.00	2,500	0.081	0.097
		DIR Customer:	\$136.50	2,500	0.0429	0.05148	\$150.54	2,500	0.04758	0.05694	\$165.36	2,500	0.05226	0.0624	\$181.74	2,500	0.05772	0.06864	\$199.68	2,500	0.06318	0.07566
	Plan 2	MSRP:	\$285.00	5,000	0.033	0.044	\$314.00	5,000	0.036	0.048	\$345.00	5,000	0.04	0.053	\$380.00	5,000	0.044	0.058	\$418.00	5,000	0.048	0.064
		DIR Customer:	\$222.30	5,000	0.02574	0.03432	\$244.92	5,000	0.02808	0.03744	\$269.10	5,000	0.0312	0.04134	\$296.40	5,000	0.03432	0.04524	\$326.04	5,000	0.03744	0.04992
	Plan 3	MSRP:	\$385.00	10,000	0.027	0.033	\$424.00	10,000	0.03	0.036	\$466.00	10,000	0.033	0.04	\$513.00	10,000	0.036	0.044	\$564.00	10,000	0.04	0.048
		DIR Customer:	\$300.30	10,000	0.02106	0.02574	\$330.72	10,000	0.0234	0.02808	\$363.48	10,000	0.02574	0.0312	\$400.14	10,000	0.02808	0.03432	\$439.92	10,000	0.0312	0.03744
790 / 795	Plan 1	MSRP:	\$250.00	2,500	0.055	0.066	\$275.00	2,500	0.061	0.073	\$303.00	2,500	0.067	0.08	\$333.00	2,500	0.074	0.088	\$366.00	2,500	0.081	0.097
		DIR Customer:	\$195.00	2,500	0.0429	0.05148	\$214.50	2,500	0.04758	0.05694	\$236.34	2,500	0.05226	0.0624	\$259.74	2,500	0.05772	0.06864	\$285.48	2,500	0.06318	0.07566
	Plan 2	MSRP:	\$360.00	5,000	0.033	0.044	\$396.00	5,000	0.036	0.048	\$436.00	5,000	0.04	0.053	\$480.00	5,000	0.044	0.058	\$528.00	5,000	0.048	0.064
		DIR Customer:	\$280.80	5,000	0.02574	0.03432	\$308.88	5,000	0.02808	0.03744	\$340.08	5,000	0.0312	0.04134	\$374.40	5,000	0.03432	0.04524	\$411.84	5,000	0.03744	0.04992
	Plan 3	MSRP:	\$460.00	10,000	0.027	0.033	\$506.00	10,000	0.03	0.036	\$557.00	10,000	0.033	0.04	\$613.00	10,000	0.036	0.044	\$674.00	10,000	0.04	0.048
		DIR Customer:	\$358.80	10,000	0.02106	0.02574	\$394.68	10,000	0.0234	0.02808	\$434.46	10,000	0.02574	0.0312	\$478.14	10,000	0.02808	0.03432	\$525.72	10,000	0.0312	0.03744

700 C Series Maintenance Notes

- The "Monthly Base" fee includes unlimited scanning (if applicable), regardless of color mode.
- The "Monthly B&W Allowance" is the included volume of K-only prints, as counted by [Meter B]. Any K-only prints in excess of the allowance are charged the "B&W Overage".
- Any prints produced in CMYK mode, regardless if a B&W image or color image, are charged the "Color" square footage fee. Such prints are counted in [Meter A]. These prints are not included in the "Monthly B&W Allowance". Color (CMYK) mode may be set as the system default and can be switched to B&W mode in the submission application, print driver or on the touch screen by the user.
- Prices for travel Zones 1 & 2 (0-100 miles (160 km) radius from the local KIP Service location). Contact KIP for pricing outside of Zone 2.
- Pricing and Service Programs may be adjusted to suit individual customer requirements.

KIP SUGGESTED MAINTENANCE PLANS

KIP 900 C SERIES

Model	Plan	Year 1				Year 2				Year 3				Year 4				Year 5				
		Monthly Cost	Allowance	B&W Excess	Color Excess	Monthly Cost	Allowance	BW Excess	Color Excess	Monthly Cost	Allowance	BW Excess	Color Excess	Monthly Cost	Allowance	BW Excess	Color Excess	Monthly Cost	Allowance	BW Excess	Color Excess	
900 (Printer Only)	Plan 1	MSRP:	\$147.00	0	0.021	0.033	\$162.00	0	0.023	0.036	\$178.00	0	0.025	0.04	\$196.00	0	0.028	0.044	\$216.00	0	0.031	0.048
		DIR Customer:	\$114.66	0	0.01638	0.02574	\$126.36	0	0.01794	0.02808	\$138.84	0	0.0195	0.0312	\$152.88	0	0.02184	0.03432	\$168.48	0	0.02418	0.03744
	Plan 2	MSRP:	\$520.00	20,000	0.022	0.022	\$572.00	20,000	0.024	0.024	\$629.00	20,000	0.026	0.026	\$692.00	20,000	0.029	0.029	\$761.00	20,000	0.032	0.032
		DIR Customer:	\$405.60	20,000	0.01716	0.01716	\$446.16	20,000	0.01872	0.01872	\$490.62	20,000	0.02028	0.02028	\$539.76	20,000	0.02262	0.02262	\$593.58	20,000	0.02496	0.02496
	Plan 3	MSRP:	\$624.00	30,000	0.021	0.021	\$686.00	30,000	0.023	0.023	\$755.00	30,000	0.025	0.025	\$831.00	30,000	0.028	0.028	\$914.00	30,000	0.031	0.031
		DIR Customer:	\$486.72	30,000	0.01638	0.01638	\$535.08	30,000	0.01794	0.01794	\$588.90	30,000	0.0195	0.0195	\$648.18	30,000	0.02184	0.02184	\$712.92	30,000	0.02418	0.02418
	Plan 4	MSRP:	\$1,166.00	60,000	0.02	0.02	\$1,283.00	60,000	0.022	0.022	\$1,411.00	60,000	0.024	0.024	\$1,552.00	60,000	0.026	0.026	\$1,707.00	60,000	0.029	0.029
		DIR Customer:	\$909.48	60,000	0.0156	0.0156	\$1,000.74	60,000	0.01716	0.01716	\$1,100.58	60,000	0.01872	0.01872	\$1,210.56	60,000	0.02028	0.02028	\$1,331.46	60,000	0.02262	0.02262
	Plan 5	MSRP:	\$1,543.00	80,000	0.019	0.019	\$1,697.00	80,000	0.021	0.021	\$1,867.00	80,000	0.023	0.023	\$2,054.00	80,000	0.025	0.025	\$2,259.00	80,000	0.028	0.028
		DIR Customer:	\$1,203.54	80,000	0.01482	0.01482	\$1,323.66	80,000	0.01638	0.01638	\$1,456.26	80,000	0.01794	0.01794	\$1,602.12	80,000	0.0195	0.0195	\$1,762.02	80,000	0.02184	0.02184
980	Plan 1	MSRP:	\$169.00	0	0.021	0.033	\$186.00	0	0.023	0.036	\$205.00	0	0.025	0.04	\$226.00	0	0.028	0.044	\$249.00	0	0.031	0.048
		DIR Customer:	\$131.82	0	0.01638	0.02574	\$145.08	0	0.01794	0.02808	\$159.90	0	0.0195	0.0312	\$176.28	0	0.02184	0.03432	\$194.22	0	0.02418	0.03744
	Plan 2	MSRP:	\$542.00	20,000	0.022	0.022	\$596.00	20,000	0.024	0.024	\$656.00	20,000	0.026	0.026	\$722.00	20,000	0.029	0.029	\$794.00	20,000	0.032	0.032
		DIR Customer:	\$422.76	20,000	0.01716	0.01716	\$464.88	20,000	0.01872	0.01872	\$511.68	20,000	0.02028	0.02028	\$563.16	20,000	0.02262	0.02262	\$619.32	20,000	0.02496	0.02496
	Plan 3	MSRP:	\$646.00	30,000	0.021	0.021	\$711.00	30,000	0.023	0.023	\$782.00	30,000	0.025	0.025	\$860.00	30,000	0.028	0.028	\$946.00	30,000	0.031	0.031
		DIR Customer:	\$503.88	30,000	0.01638	0.01638	\$554.58	30,000	0.01794	0.01794	\$609.96	30,000	0.0195	0.0195	\$670.80	30,000	0.02184	0.02184	\$737.88	30,000	0.02418	0.02418
	Plan 4	MSRP:	\$1,188.00	60,000	0.02	0.02	\$1,307.00	60,000	0.022	0.022	\$1,438.00	60,000	0.024	0.024	\$1,582.00	60,000	0.026	0.026	\$1,740.00	60,000	0.029	0.029
		DIR Customer:	\$926.64	60,000	0.0156	0.0156	\$1,019.46	60,000	0.01716	0.01716	\$1,121.64	60,000	0.01872	0.01872	\$1,233.96	60,000	0.02028	0.02028	\$1,357.20	60,000	0.02262	0.02262
	Plan 5	MSRP:	\$1,565.00	80,000	0.019	0.019	\$1,722.00	80,000	0.021	0.021	\$1,894.00	80,000	0.023	0.023	\$2,083.00	80,000	0.025	0.025	\$2,291.00	80,000	0.028	0.028
		DIR Customer:	\$1,220.70	80,000	0.01482	0.01482	\$1,343.16	80,000	0.01638	0.01638	\$1,477.32	80,000	0.01794	0.01794	\$1,624.74	80,000	0.0195	0.0195	\$1,786.98	80,000	0.02184	0.02184
990	Plan 1	MSRP:	\$186.00	0	0.021	0.033	\$205.00	0	0.023	0.036	\$226.00	0	0.025	0.04	\$249.00	0	0.028	0.044	\$274.00	0	0.031	0.048
		DIR Customer:	\$145.08	0	0.01638	0.02574	\$159.90	0	0.01794	0.02808	\$176.28	0	0.0195	0.0312	\$194.22	0	0.02184	0.03432	\$213.72	0	0.02418	0.03744
	Plan 2	MSRP:	\$558.00	20,000	0.022	0.022	\$614.00	20,000	0.024	0.024	\$675.00	20,000	0.026	0.026	\$743.00	20,000	0.029	0.029	\$817.00	20,000	0.032	0.032
		DIR Customer:	\$435.24	20,000	0.01716	0.01716	\$478.92	20,000	0.01872	0.01872	\$526.50	20,000	0.02028	0.02028	\$579.54	20,000	0.02262	0.02262	\$637.26	20,000	0.02496	0.02496
	Plan 3	MSRP:	\$662.00	30,000	0.021	0.021	\$728.00	30,000	0.023	0.023	\$801.00	30,000	0.025	0.025	\$881.00	30,000	0.028	0.028	\$969.00	30,000	0.031	0.031
		DIR Customer:	\$516.36	30,000	0.01638	0.01638	\$567.84	30,000	0.01794	0.01794	\$624.78	30,000	0.0195	0.0195	\$687.18	30,000	0.02184	0.02184	\$755.82	30,000	0.02418	0.02418
	Plan 4	MSRP:	\$1,204.00	60,000	0.02	0.02	\$1,324.00	60,000	0.022	0.022	\$1,456.00	60,000	0.024	0.024	\$1,602.00	60,000	0.026	0.026	\$1,762.00	60,000	0.029	0.029
		DIR Customer:	\$939.12	60,000	0.0156	0.0156	\$1,032.72	60,000	0.01716	0.01716	\$1,135.68	60,000	0.01872	0.01872	\$1,249.56	60,000	0.02028	0.02028	\$1,374.36	60,000	0.02262	0.02262
	Plan 5	MSRP:	\$1,582.00	80,000	0.019	0.019	\$1,740.00	80,000	0.021	0.021	\$1,914.00	80,000	0.023	0.023	\$2,105.00	80,000	0.025	0.025	\$2,316.00	80,000	0.028	0.028
		DIR Customer:	\$1,233.96	80,000	0.01482	0.01482	\$1,357.20	80,000	0.01638	0.01638	\$1,492.92	80,000	0.01794	0.01794	\$1,641.90	80,000	0.0195	0.0195	\$1,806.48	80,000	0.02184	0.02184

Maintenance Notes Pricing provided is for new equipment in its first year of service. | Future year pricing may be at an increased rate based on equipment use and condition. | Zone 1 & 2 pricing.

Preventative Maintenance Monthly Full Service maintenance Repairs are completed on site by factory trained technicians. Preventative maintenance, replacement parts, travel and labor are covered under this agreement. Emergency support covered under this agreement during normal business hours. Toner, paper & original glass parts are not covered under this agreement. Preventative maintenance will be provided per the recommended PM schedule.

Consumables Toner is not included in the KIP Suggested Maintenance Plans | Paper is not included in the KIP Suggested Maintenance Plans

KIP SUGGESTED MAINTENANCE PLANS

KIP 71 G SERIES

Model	Plan	Year 1			Year 2			Year 3			Year 4			Year 5			
		Monthly Cost	B&W Allowance	B&W Excess	Monthly Cost	B&W Allowance	B&W Excess	Monthly Cost	B&W Allowance	B&W Excess	Monthly Cost	B&W Allowance	B&W Excess	Monthly Cost	B&W Allowance	B&W Excess	
71 G Series Systems	Plan 1	MSRP:	\$62.00	0	0.083	\$68.00	0	0.091	\$75.00	0	0.1	\$83.00	0	0.11	\$91.00	0	0.121
		DIR Customer:	\$48.36	0	0.06474	\$53.04	0	0.07098	\$58.50	0	0.078	\$64.74	0	0.0858	\$70.98	0	0.09438
	Plan 2	MSRP:	\$152.00	2,000	0.045	\$167.00	2,000	0.05	\$184.00	2,000	0.055	\$202.00	2,000	0.061	\$222.00	2,000	0.067
		DIR Customer:	\$118.56	2,000	0.0351	\$130.26	2,000	0.039	\$143.52	2,000	0.0429	\$157.56	2,000	0.04758	\$173.16	2,000	0.05226
	Plan 3	MSRP:	\$283.00	5,000	0.031	\$311.00	5,000	0.034	\$342.00	5,000	0.037	\$376.00	5,000	0.041	\$414.00	5,000	0.045
		DIR Customer:	\$220.74	5,000	0.02418	\$242.58	5,000	0.02652	\$266.76	5,000	0.02886	\$293.28	5,000	0.03198	\$322.92	5,000	0.0351
	Plan 4	MSRP:	\$421.00	10,000	0.028	\$463.00	10,000	0.031	\$509.00	10,000	0.034	\$560.00	10,000	0.037	\$616.00	10,000	0.041
		DIR Customer:	\$328.38	10,000	0.02184	\$361.14	10,000	0.02418	\$397.02	10,000	0.02652	\$436.80	10,000	0.02886	\$480.48	10,000	0.03198

KIP 75 G SERIES

Model	Plan	Year 1			Year 2			Year 3			Year 4			Year 5			
		Monthly Cost	B&W Allowance	B&W Excess	Monthly Cost	B&W Allowance	B&W Excess	Monthly Cost	B&W Allowance	B&W Excess	Monthly Cost	B&W Allowance	B&W Excess	Monthly Cost	B&W Allowance	B&W Excess	
75 G Series Printers: 7570	Plan 2	MSRP:	\$191.00	5,000	0.031	\$210.00	5,000	0.034	\$231.00	5,000	0.037	\$254.00	5,000	0.041	\$279.00	5,000	0.045
		DIR Customer:	\$148.98	5,000	0.02418	\$163.80	5,000	0.02652	\$180.18	5,000	0.02886	\$198.12	5,000	0.03198	\$217.62	5,000	0.0351
	Plan 3	MSRP:	\$299.00	10,000	0.025	\$329.00	10,000	0.028	\$362.00	10,000	0.031	\$398.00	10,000	0.034	\$438.00	10,000	0.037
		DIR Customer:	\$233.22	10,000	0.0195	\$256.62	10,000	0.02184	\$282.36	10,000	0.02418	\$310.44	10,000	0.02652	\$341.64	10,000	0.02886
	Plan 4	MSRP:	\$383.00	15,000	0.02	\$421.00	15,000	0.022	\$463.00	15,000	0.024	\$509.00	15,000	0.026	\$560.00	15,000	0.029
		DIR Customer:	\$298.74	15,000	0.0156	\$328.38	15,000	0.01716	\$361.14	15,000	0.01872	\$397.02	15,000	0.02028	\$436.80	15,000	0.02262
Plan 5	MSRP:	\$574.00	30,000	0.017	\$631.00	30,000	0.019	\$694.00	30,000	0.021	\$763.00	30,000	0.023	\$839.00	30,000	0.025	
	DIR Customer:	\$447.72	30,000	0.01326	\$492.18	30,000	0.01482	\$541.32	30,000	0.01638	\$595.14	30,000	0.01794	\$654.42	30,000	0.0195	
75 G Series Systems with Scanner: 7580	Plan 2	MSRP:	\$273.00	5000	0.031	\$300.00	5000	0.034	\$330.00	5000	0.037	\$363.00	5000	0.041	\$399.00	5000	0.045
		DIR Customer:	\$212.94	5,000	0.02418	\$234.00	5,000	0.02652	\$257.40	5,000	0.02886	\$283.14	5,000	0.03198	\$311.22	5,000	0.0351
	Plan 3	MSRP:	\$383.00	10,000	0.025	\$421.00	10,000	0.028	\$463.00	10,000	0.031	\$509.00	10,000	0.034	\$560.00	10,000	0.037
		DIR Customer:	\$298.74	10,000	0.0195	\$328.38	10,000	0.02184	\$361.14	10,000	0.02418	\$397.02	10,000	0.02652	\$436.80	10,000	0.02886
	Plan 4	MSRP:	\$470.00	15,000	0.02	\$517.00	15,000	0.022	\$569.00	15,000	0.024	\$626.00	15,000	0.026	\$689.00	15,000	0.029
		DIR Customer:	\$366.60	15,000	0.0156	\$403.26	15,000	0.01716	\$443.82	15,000	0.01872	\$488.28	15,000	0.02028	\$537.42	15,000	0.02262
Plan 5	MSRP:	\$657.00	30,000	0.017	\$723.00	30,000	0.019	\$795.00	30,000	0.021	\$875.00	30,000	0.023	\$963.00	30,000	0.025	
	DIR Customer:	\$512.46	30,000	0.01326	\$563.94	30,000	0.01482	\$620.10	30,000	0.01638	\$682.50	30,000	0.01794	\$751.14	30,000	0.0195	

Maintenance Notes Pricing provided is for new equipment in its first year of service. | Future year pricing may be at an increased rate based on equipment use and condition. | Zone 1 & 2 pricing.

Preventative Maintenance Monthly Full Service maintenance Repairs are completed on site by factory trained technicians. Preventative maintenance, replacement parts, travel and labor are covered under this agreement. Emergency support covered under this agreement during normal business hours. Toner, paper & original glass parts are not covered under this agreement. Preventative maintenance will be provided per the recommended PM schedule.

Consumables Toner is not included in the KIP Suggested Maintenance Plans | Paper is not included in the KIP Suggested Maintenance Plans

KIP SUGGESTED MAINTENANCE PLANS

KIP 79 G SERIES

Model	Plan	Year 1			Year 2			Year 3			Year 4			Year 5				
		Monthly Cost	B&W Allowance	B&W Excess	Monthly Cost	B&W Allowance	B&W Excess	Monthly Cost	B&W Allowance	B&W Excess	Monthly Cost	B&W Allowance	B&W Excess	Monthly Cost	B&W Allowance	B&W Excess		
79 G Series Printers: 7970	Plan 2	MSRP:	\$299.00	10,000	0.025	\$329.00	10,000	0.028	\$362.00	10,000	0.031	\$398.00	10,000	0.034	\$438.00	10,000	0.037	
		DIR Customer:	\$233.22	10,000	0.0195	\$256.62	10,000	0.02184	\$282.36	10,000	0.02418	\$310.44	10,000	0.02652	\$341.64	10,000	0.02886	
	Plan 3	MSRP:	\$383.00	15,000	0.02	\$421.00	15,000	0.022	\$463.00	15,000	0.024	\$509.00	15,000	0.026	\$560.00	15,000	0.029	
		DIR Customer:	\$298.74	15,000	0.0156	\$328.38	15,000	0.01716	\$361.14	15,000	0.01872	\$397.02	15,000	0.02028	\$436.80	15,000	0.02262	
	Plan 4	MSRP:	\$574.00	30,000	0.016	\$631.00	30,000	0.018	\$694.00	30,000	0.02	\$763.00	30,000	0.022	\$839.00	30,000	0.024	
		DIR Customer:	\$447.72	30,000	0.01248	\$492.18	30,000	0.01404	\$541.32	30,000	0.0156	\$595.14	30,000	0.01716	\$654.42	30,000	0.01872	
	Plan 5	MSRP:	\$728.00	45,000	0.015	\$801.00	45,000	0.017	\$881.00	45,000	0.019	\$969.00	45,000	0.021	\$1,066.00	45,000	0.023	
		DIR Customer:	\$567.84	45,000	0.0117	\$624.78	45,000	0.01326	\$687.18	45,000	0.01482	\$755.82	45,000	0.01638	\$831.48	45,000	0.01794	
	Plan 6	MSRP:	\$848.00	60,000	0.014	\$933.00	60,000	0.015	\$1,026.00	60,000	0.017	\$1,129.00	60,000	0.019	\$1,242.00	60,000	0.021	
		DIR Customer:	\$661.44	60,000	0.01092	\$727.74	60,000	0.0117	\$800.28	60,000	0.01326	\$880.62	60,000	0.01482	\$968.76	60,000	0.01638	
	79 G Series Systems with Scanner: 7980 7990	Plan 2	MSRP:	\$383.00	10,000	0.025	\$421.00	10,000	0.028	\$463.00	10,000	0.031	\$509.00	10,000	0.034	\$560.00	10,000	0.037
			DIR Customer:	\$298.74	10,000	0.0195	\$328.38	10,000	0.02184	\$361.14	10,000	0.02418	\$397.02	10,000	0.02652	\$436.80	10,000	0.02886
Plan 3		MSRP:	\$468.00	15,000	0.02	\$515.00	15,000	0.022	\$567.00	15,000	0.024	\$624.00	15,000	0.026	\$686.00	15,000	0.029	
		DIR Customer:	\$365.04	15,000	0.0156	\$401.70	15,000	0.01716	\$442.26	15,000	0.01872	\$486.72	15,000	0.02028	\$535.08	15,000	0.02262	
Plan 4		MSRP:	\$657.00	30,000	0.016	\$723.00	30,000	0.018	\$795.00	30,000	0.02	\$875.00	30,000	0.022	\$963.00	30,000	0.024	
		DIR Customer:	\$512.46	30,000	0.01248	\$563.94	30,000	0.01404	\$620.10	30,000	0.0156	\$682.50	30,000	0.01716	\$751.14	30,000	0.01872	
Plan 5		MSRP:	\$810.00	45,000	0.015	\$891.00	45,000	0.017	\$980.00	45,000	0.019	\$1,078.00	45,000	0.021	\$1,186.00	45,000	0.023	
		DIR Customer:	\$631.80	45,000	0.0117	\$694.98	45,000	0.01326	\$764.40	45,000	0.01482	\$840.84	45,000	0.01638	\$925.08	45,000	0.01794	
Plan 6		MSRP:	\$930.00	60,000	0.014	\$1,023.00	60,000	0.015	\$1,125.00	60,000	0.017	\$1,238.00	60,000	0.019	\$1,362.00	60,000	0.021	
		DIR Customer:	\$725.40	60,000	0.01092	\$797.94	60,000	0.0117	\$877.50	60,000	0.01326	\$965.64	60,000	0.01482	\$1,062.36	60,000	0.01638	

Maintenance Notes Pricing provided is for new equipment in its first year of service. | Future year pricing may be at an increased rate based on equipment use and condition. | Zone 1 & 2 pricing.

Preventative Maintenance Monthly Full Service maintenance Repairs are completed on site by factory trained technicians. Preventative maintenance, replacement parts, travel and labor are covered under this agreement. Emergency support covered under this agreement during normal business hours. Toner, paper & original glass parts are not covered under this agreement. Preventative maintenance will be provided per the recommended PM schedule.

Consumables Toner is not included in the KIP Suggested Maintenance Plans | Paper is not included in the KIP Suggested Maintenance Plans

KIP INSTALLATION

	MODEL	Item Number	Description	MSRP Zone 1 & 2	DIR Customer Zone 1 & 2	
<i>KIP G Series</i>	KIP 7170	K7170INSTALL	KIP 71 Series Installation	\$985	\$768.30	
	KIP 7170 Print Tray	K71PTINSTALL	KIP 71 Series Print Tray Installation	\$55	\$42.90	
	KIP 7170 Print & Org Tray	K71POTINSTALL	KIP 71 Series Print & Original Tray Installation	\$165	\$128.70	
	KIP 7570	K7570INSTALL	KIP 7570 Printer Installation	\$985	\$768.30	
	KIP 7580	K7580INSTALL	KIP 7580 Installation	\$1,085	\$846.30	
	KIP 7970	K7970INSTALL	KIP 7970 Printer Installation	\$1,085	\$846.30	
	KIP 7980	K7980INSTALL	KIP 7980 Installation	\$1,185	\$924.30	
	KIP 7990	K7990INSTALL	KIP 7990 Installation	\$1,285	\$1,002.30	
	1200 Stacker	K1200INSTALL	KIP 1200 Stacker Installation	\$165	\$128.70	
<i>KIP C Series</i>	KIP 730/750/755/770/775	K700PINSTALL	KIP 700 Series Printer Installation	\$995	\$776.10	
	KIP 740/760/765/780/785	K700MFPINSTALL	KIP 700 Series MFP installation	\$1,095	\$854.10	
	KIP 790/795	K790INSTALL	KIP 790/795 Installation	\$1,195	\$932.10	
	700 Stacker (Back)	K700SINSTALL	KIP 700 Stacker Installation	\$165	\$128.70	
	KIP 900 Printer	K900PINSTALL	KIP 900 Printer Installation	\$1,205	\$939.90	
	KIP 980	K980MFPINSTALL	KIP 980 Installation	\$1,315	\$1,025.70	
	KIP 990	K990MFPINSTALL	KIP 990 Installation	\$1,425	\$1,111.50	
	970 Stacker (Back)	K970SINSTALL	KIP 900 Stacker Installation	\$165	\$128.70	
	KIP 720 Scanner	K720SCINSTALL	KIP 720 Scanner Installation	\$415	\$323.70	
<i>Scanners</i>	KIP 2300 Scanner	K2300SCINSTALL	KIP 2300 Scanner Installation	\$415	\$323.70	
	Scanner Stand	KSTANDINSTALL	KIP Scanner Stand Installation	\$165	\$128.70	
	KIPFold 1600	KF1600INSTALL	KIP Fold 1600 Installation	\$655	\$510.90	
<i>KIPFold</i>	KIPFold 1800	KF1800INSTALL	KIP Fold 1800 Installation	\$875	\$682.50	
	KIPFold 2800	KF2800INSTALL	KIP Fold 2800 Installation	\$1,095	\$854.10	
	<i>Software</i>	KIPCONNECT1		Monthly fee of KIP Connect per machine	\$5	\$3.90
KIPCONNECT12			1 year of KIP Connect per machine	\$64	\$49.92	
KIP Connect		KIPCONNECT24		2 years of KIP Connect per machine	\$127	\$99.06
		KIPCONNECT36		3 years of KIP Connect per machine	\$191	\$148.98
		KIPCONNECT48		4 years of KIP Connect per machine	\$254	\$198.12
		KIPCONNECT60		5 years of KIP Connect per machine	\$318	\$248.04
		KIP ImagePro *	KIMAGEPINSTALL	KIP Image Pro Installation	\$40	\$31.20
KIP Windows Driver *	KWINDVRINSTALL	KIP Windows Driver Installation	\$40	\$31.20		
Advanced Services **	LABORSTD	KIP Labor/Advanced Services per hour	\$245	\$191.10		

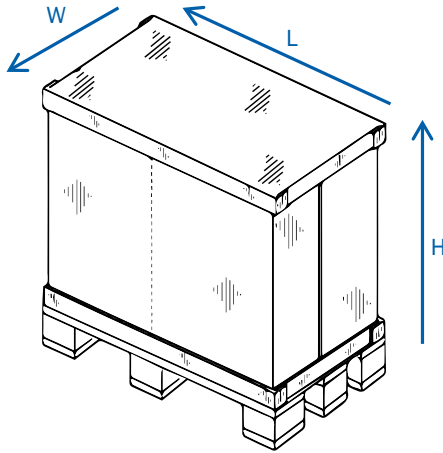
* Each additional workstation above standard install

** Services provided outside noted inclusions

- Installation of product includes basic system hardware & requested KIP Driver/Applications on three workstations. Network connections should be performed by the customer Network Administrator at time of hardware installation. On-site operator training for up to three people will be conducted immediately following installation. Return visits for system upgrades or changes will incur additional charges.
- Rates based on travel Zones 1 & 2 (up to 100 mile (160 km) from the local KIP service center).
- Contact KIP at KC3@KIP.com or 248-474-2900 for Zone 3 pricing.

CRATED DIMENSIONS & WEIGHT

Crated Dimensions and Weight



KIP COLOR SERIES	DIMENSIONS	WEIGHT
KIP 730/750/755 2R Printer	65"(L) x 46"(W) x 58"(H) 166 cm (L) x 115 cm (W) x 148 cm (H)	1,023 lbs / 464 kg
KIP 740/760/765 2R MFP	65"(L) x 46"(W) x 58"(H) 166 cm (L) x 115 cm (W) x 148 cm (H)	1,108 lbs / 503 kg
KIP 770/775 4R Printer	65"(L) x 45"(W) x 62"(H) 166 cm (L) x 114 cm (W) x 157 cm (H)	1,200 lbs / 545 kg
KIP 780/785 4R MFP	65"(L) x 45"(W) x 62"(H) 166 cm (L) x 114 cm (W) x 157 cm (H)	1,253 lbs / 569 kg
KIP 790/795 4R Production System with 2300 Scanner & Stand	Pallet 1 - Production System: 65"(L) x 45"(W) x 62"(H) 166 cm (L) x 114 cm (W) x 157 cm (H)	1,200 lbs / 545 kg
	Pallet 2 - KIP 2300 Scanner: 58"(L) x 27"(W) x 25"(H) / 147cm (L) x 69cm (W) x 64cm (H)	245 lbs / 112 kg
	Pallet 3 - Scanner Stand: 56"(L) x 23"(W) x 39"(H) / 147cm (L) x 58cm (W) x 99cm (H)	230 lbs / 104 kg
KIP 700 C Series Stacker	56"(L) x 45"(W) x 26"(H)	90 lbs
KIP 970	64"(L) x 45"(W) x 64"(H) / 163cm (L) x 115cm (W) x 163cm (H)	1,375 lbs / 624 kg
KIP 900 Auto Stacker	42"(L) x 39"(W) x 31"(H) / 107cm (L) x 99cm (W) x 79cm (H)	175 lbs / 80 kg

KIP G SERIES

KIP 71 G Series	58"(L) x 33"(W) x 65"(H) / 147cm (L) x 84cm (W) x 165cm (H)	675 lbs / 306 kg
KIP 75 G Series Printer	57"(L) x 33"(W) x 68"(H) / 145cm (L) x 84cm (W) x 173cm (H)	730 lbs / 331 kg
KIP 75 G Series MFP	57"(L) x 33"(W) x 68"(H) / 145cm (L) x 84cm (W) x 173cm (H)	765 lbs / 347 kg
KIP 79 G Series Printer	59"(L) x 36"(W) x 56"(H) / 150cm (L) x 91cm (W) x 142cm (H)	980 lbs / 445 kg
KIP 1200 Auto Stacker	47"(L) x 40"(W) x 27"(H) / 119cm (L) x 102cm (W) x 69cm (H)	178 lbs / 81 kg

KIP SCANNERS

KIP 720 Scanner	50"(L) x 20"(W) x 12"(H) / 127cm (L) x 51cm (W) x 31cm (H)	76 lbs / 34 kg
KIP 2300 Scanner	58"(L) x 27"(W) x 25"(H) / 147cm (L) x 69cm (W) x 64cm (H)	245 lbs / 112 kg
Scanner Stand	56"(L) x 23"(W) x 39"(H) / 147cm (L) x 58cm (W) x 99cm (H)	230 lbs / 104 kg





WWW.KIP.COM | +1 248-474-2900 | +1 800-252-6793